

# TIME System Newsletter Crime Information Bureau



The Wisconsin driver photo bill was signed into law becoming Act 167. Act 167 created § 165.8287 requiring the Department of Transportation to make driver photos available to the Department of Justice in a digital format and that the Department of Justice shall provide them to Wisconsin, Federal and other state law enforcement personnel via the TIME System.



Act 167 establishes an effective date of March 1, 2011 for implementation. The Department of Justice and Department of Transportation have already reviewed options for deployment and will be working together to make Wisconsin driver photos available to you as soon as possible.

We have received approval to fill one of the two vacant training representative positions within CIB. ☺ The position will be opened for state transfers first then to a statewide solicitation of applications if no transfer candidates are selected. I encourage those of you that have expressed an interest, and those with a new interest, to apply. Over the years I have had the opportunity to meet many of you and realize the expertise and knowledge base available. Watch for the announcement in the normal places such as the state job bulletins and WILENET.



Speaking of vacancies, Vickie Stamm a long time employee of CIB is retiring from state service with her last day of work on May 21<sup>st</sup>. Vickie has held several positions within CIB and is a very familiar face at the CIB Technology Conferences each year where she played a vital role in their success. We wish her well in her retirement.

Please feel free to contact me or any of the CIB staff to discuss your thoughts.

*WALT NEVERMAN*

Walt Neverman  
Director CIB

## INSIDE THIS ISSUE:

CJIS Security Policy	2
Milw. Brewer Plates	3
2011 TIME Rates	3
N-DEx	4
DNR Citation File	4
O/S DL Photos	5
Person of Interest	5
Enforcer Software	5
Info to Tow Co's	6
Endang. Res. Plate.	6
IE8	7
CHRI on Retired	7
Validation	7
Juvenile P/P	8
Portal 100 Timer	8
WI DL Photos	9
Another \$H	9
NCIC Sex Offender	10
DOE/DOW	11
Child Support/DOT	11
TRAIN	12
NCIC Code Updates	12



## CJIS Security Policy

September 30<sup>th</sup>, 2010 is just around the corner and an important date! September 30<sup>th</sup>, 2010 is the deadline the CJIS (Criminal Justice Information Services) Division of the FBI has set for agencies to meet the below security requirements for workstations or networks that have TIME System access:

- Passwords must be at least 8 characters in length.
- Reject reuse of the last 10 passwords for each user.
- All workstations w/wireless access must have an activated personal/software based firewall.
- Wireless or dial-up access must use a form of advanced authentication.
- Any data transmitted over a public segment/dial-up/wireless/via the Internet must be encrypted at a minimum of 128 bit **and** meet the FIPS 140-2 NIST certification standard.

Another important date when it comes to CJIS Security Policy requirements is January 26, 2010. On this date, CJIS released changes to the CJIS Security Policy that took effect immediately. In addition, a new, fully updated version (version 5.0) of the CJIS Security Policy is already in the works. These immediately effective changes are:

- The Security Point of Contact has been renamed the Local Agency Security Officer (LASO).
- Security Awareness training is now required every two years rather than every 3 years.
- Allows the use of a Virtual Private Network (VPN) to meet the advanced authentication requirements **from a secure location** until September 30, 2013.

New security requirements that are immediately in effect include:

- Unsuccessful login attempts – Where technically feasible, agencies must enforce a limit of no more than 5 consecutive invalid access attempts by a user before their account is locked for a minimum of 10 minutes (unless unlocked by a system administrator).
- Inactivity session locks – after a maximum of 30 minutes of inactivity on a terminal, the agency/software must initiate a session lock. The terminal must remain locked until the user reestablishes access using the appropriate identification and authentication (i.e. userid/password). *Devices within a police vehicle or used to conduct dispatch functions within a physically secure location are exempt from this requirement.*
- Least privilege – agencies shall enforce the most restrictive set of rights/privileges or access needed by users for the performance of assigned tasks.
- Information flow security controls - the flow of data must be regulated in addition to access to the data.

If you have questions regarding these important deadlines and changes to security requirements, or need a copy of the CJIS Security Policy, you can contact Chris Kalina, TIME System Operations Coordinator at [kalinaca@doj.state.wi.us](mailto:kalinaca@doj.state.wi.us) or 608-266-7394.

## Milwaukee Brewers License Plates

Two designs of Milwaukee Brewers license plates are available from the Wisconsin Department of Transportation, Division of Motor Vehicles. The Division began issuing these plates on 3/30/2010.

Design #1 is a baseball glove design, with the retro Brewers logo (ball and glove design) as the symbol on the left side of the license plate. Plates have white letters and numbers on a light blue background. The word 'Wisconsin' is at the top of the plate and 'Milwaukee Brewers' is printed on the bottom of the plate, both titles in yellow letters. These plates will have four numbers followed by two alpha characters, beginning with plate number 1001AB. Plates may be personalized.



Design #2 uses the current Milwaukee Brewers stylized 'M' logo as the symbol on the left side of the license plate. Plates have white letters and numbers on a dark blue background. The word 'Wisconsin' is at the top of the plate and 'Milwaukee Brewers' is printed on the bottom of the plate, both titles in gold letters. These plates will have four numbers followed by two alpha characters, beginning with plate number 1001AC. Plates may be personalized.



The license plate type code for querying these plates via the TIME System is 'CV'. The plate type code for entry is 'PS' (professional sports team).

## TIME Rates 2011

The TIME System Advisory Committee voted for no change in the rates for 2011:

<b>System Access Fees</b>	<b>Current</b>	<b>Effective 1/1/2011</b>
Full Service & MDT Access	\$50/month	no change
eTIME Access Only (Traditional)	\$50/month	no change
eTIME Access Only (Non-Traditional)	\$100/month	no change
Non-Traditional	\$100/month	no change
Department of Corrections	\$6,000/month	no change
District Attorneys	\$6,000/month	no change
<b>System Support</b>		
Per Certified Officer	\$3.50/month	no change
Minimum Officer Annual Billing	\$168/year	no change
<b>Maintenance</b>		
Per Covered Terminal	\$50/month	no change
<b>BadgerNet</b>		
Per TIME Circuit	\$620/month	**

**Note: Agencies with multiple access levels are billed at highest system access fee applicable.**

Traditional agencies are those that also pay the per officer System Support fee i.e. police/sheriffs departments. CIB is not aware of any changes from DET regarding Badgernet at this time. Should you have specific questions about costs and fees applicable to your agency, please do not hesitate to contact Chris Kalina, TIME System Operations Coordinator, at 608-266-7394.



## N-DEx

N-DEx (National Data Exchange) is a criminal justice information sharing system implemented by the FBI's CJIS (Criminal Justice Information Services). CJIS and the TIME System are not new to information sharing—they have been sharing NCIC, III, CIB, DNR, DOC and DOT data for years. Similar to Wisconsin's WIJIS Gateway, N-DEx provides tools for law enforcement to search, link, analyze and share criminal justice information such as incident/case report data, arrest data, booking/incarceration data and probation/parole data on a national basis. Over 1,300 agencies nationwide contribute data to N-DEx, including federal agencies and entire state systems. Over 70 million records already exist in N-DEx. N-DEx is operational 24 x 7 and continues to grow in number of records and functionality.

CJIS, the Wisconsin Department of Justice and the Wisconsin Office of Justice Assistance are working together to create a process for Wisconsin agencies to contribute data to N-DEx. Rather than creating a new process, the existing process where agencies contribute data to the WIJIS Gateway will be taken advantage of by allowing data added to the WIJIS Gateway to also be forwarded on to N-DEx. Agencies contributing data to WIJIS will be asked to sign an additional agreement authorizing the data to also be contributed to N-DEx.

Query access to N-DEX today is limited and only accessible via the CJIS Law Enforcement Online (LEO) site. To obtain LEO access you must complete an application available at [www.leo.gov](http://www.leo.gov). Once you have LEO access, you must complete a separate N-DEx application, along with an FBI Rules of Behavior form. Both forms are available on the LEO site. Your N-DEx application must be approved at the state level by the N-DEx point of contact for Wisconsin. N-DEx applications may be sent to [ka-linaca@doj.state.wi.us](mailto:ka-linaca@doj.state.wi.us). *Your agency is not required to contribute records to N-DEx to be approved to query N-DEx.*

Optional N-DEx training is available online through the LEO website. Completion certificates should be printed and maintained within your agency in the event this training is required in the future, which is currently being discussed. Also being discussed at this time are audits of N-DEx queries to ensure use is limited to authorized criminal justice/law enforcement purposes.



## DNR Citation File

The Wisconsin Department of Natural Resources has made a modification to their DNR Citation File. Only citations issued between 1987 and January 2010 will be included in a DNR Citation File response via the TIME System. The DNR has added a warning to the response indicating the information is limited. For up-to-date DNR citation information users may contact the DNR directly.

Complete DNR citation information will once again be available when the existing interface between the DNR and the TIME system can be replaced, which is expected to happen in mid-2011.

## Where are the Photos?

Now that driver's license and criminal history mugshots are available when querying a subject via eTIME, agencies are asking CIB what states make such photos available. As of 7/31/09 CIB was aware of the following states making driver's license photos available when specifically requested in the query: Alabama, Arkansas, Delaware, Georgia, Idaho, Indiana, Massachusetts, Minnesota, Mississippi, New Mexico, New Jersey, North Carolina, Ohio, Oregon, Tennessee, and Virginia. Tennessee also provides criminal history mugshots.

## Person of Interest

Beginning August 1, 2010, TIME System users may begin seeing an enhanced NCIC Missing Person File response.



Responses from the NCIC Missing Person File may contain information pertaining to a 'Person of Interest' (POI), defined as a person who may have information regarding an abduction, but for whom there is no warrant. Agencies will be allowed to add POI information to an existing Missing Person File record in a manner that can be searched, thus the missing person record will be returned regardless of who (POI or missing person) is queried. New fields have been added to the response to accommodate this additional information. A complete list of these new fields can be found at the end of this newsletter in the NCIC & CIB Code Updates section.

The POI capability may only be used after the POI has been disclosed to the general public through the issuance of an Amber Alert or other formal public notification. CIB is currently investigating what changes are needed to add this functionality to the TIME System.

## Do You Use Enforcer?

As mentioned in an earlier security article in this newsletter, an important FBI CJIS Division deadline is approaching: September 30<sup>th</sup>, 2010.

A screenshot of a Windows-style dialog box titled "Enforcer Logon". The dialog has a blue title bar and a light beige background. On the left is a small icon of a blue square with a white 'S' and a white exclamation mark. To the right of the icon are two text input fields: "User Id:" and "Password:". Below these fields is a "Logon Timeout:" label followed by a small input field containing the number "90". On the right side of the dialog are two buttons: "OK" and "Cancel".

By this date, certain security requirements must be in place for agencies that access the TIME/NCIC Systems. Agencies that use the Enforcer software to access the TIME System should be aware that *the Enforcer software does not meet the CJIS Security Policy requirements* with regards to secure passwords, and the software will not be updated to come into compliance.

Agencies still using the Enforcer software should contact Chris Kalina, TIME System Operations Coordinator, at [kalinaca@doj.state.wi.us](mailto:kalinaca@doj.state.wi.us) or 608-266-7394 as soon as possible to begin the transition to CJIS compliant software such as Portal 100 before CIB is forced to discontinue access for non-compliant agencies.



## Providing Vehicle Information to Towing Operators

Recently CIB was made aware that an agency had provided highly restricted personal information from a vehicle registration response to a non-law enforcement entity in violation of federal law. In this case, the information was provided to a towing operator.

Agencies are reminded that in many cases vehicle registration responses **do** now contain “highly restricted personal information” such as date of birth and/or driver’s license number, etc. While various Wisconsin statutes require law enforcement officers that order vehicles towed from roadways to provide the towing companies with vehicle owner and other registration information, such “highly restricted personal information” may **not** be released.

When providing owner information to a towing operator, TIME System users should review the information closely to ensure they do not release prohibited information to a non-law enforcement entity. This is particularly important when the vehicle is registered in another state, as that state’s registration response may contain personal information not commonly present on a Wisconsin vehicle registration response. The following information may **not** be released to towing operators.

- Date of birth
- Driver’s license or ID card number
- Social security number
- Medical or disability information
- Photograph
- Signature
- Biometrics, such as fingerprints

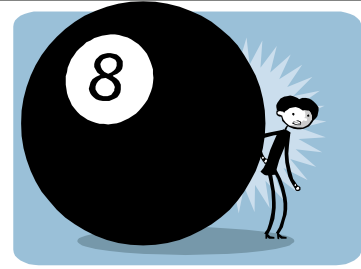


## New Endangered Resources Plate

An additional design for endangered resources license plates is now available from the Wisconsin Department of Transportation, Division of Motor Vehicles as of 04/07/10. The new plates design features a badger, tiger swallowtail butterfly, an eastern meadowlark and a prairie sunflower. The plates have black numbers and letters on a colorful background. The word ‘Wisconsin’ is at the top of the plate and ‘Endangered Resources’ is printed at the bottom; both titles are in black letters. These plates will have five numbers followed by two stacked alpha characters of ‘ER’. The numbered series will begin with 10000. Plates may be personalized.

The license plate type code for querying these plates via the TIME System is ‘CV’, and the ending ‘ER’ characters must be included to receive a response from DOT. The plate type code for entry is ‘CN’ (conservation).

## Behind the 8 Ball



Agencies continue to contact CIB reporting problems with the TRAIN, eTIME browser, Open Search, or Portal 100 applications. While the systems and problems appear to be varied, in many cases the underlying cause is the same: IE 8. Internet Explorer 8 is **not** compatible with the TRAIN, eTIME browser, or Portal 100 applications. Please ensure your agency information services/IT staff are aware of this limitation. If your agency chooses to use IE 8 with these applications, CIB cannot guarantee proper performance and will be unable to assist in problem resolution.

## Criminal History Checks on Retired Officers



In 2004, President George W. Bush signed into law the Law Enforcement Officers Safety Act of 2004, codified at 18 USC §§ 926B-926C. This federal law, subject to restrictions, allows qualified active and retired law enforcement officers who meet specified requirements and carry specified credentials to carry a concealed firearm anywhere in the United States, notwithstanding most state or local laws to the contrary.

Since this law went into effect, a question has arisen: Can an agency use the TIME System to run a criminal history background check on a retired law enforcement officer seeking credentials to carry a firearm under this federal law?

The law contains no provision for running such criminal history checks, and there is not a purpose code that allows criminal history background checks for such a reason.

For further information on the provisions and requirements of this law, consult WILENET, which has detailed information and a 'Frequently Asked Questions' document specifically pertaining to this act. Agencies may also wish to consult the relevant sections of the United States Code.

## Validation

Online validation has made the process faster and easier for all involved, but there seems to be some confusion what exactly it means when you 'certify' a record listed on the validation.

On-Line Validations		
Select Validating ORI: <input type="text" value="W10"/>		
Choose a validation period:		
Validation Period	Certification Due Date	Certification Status
<input type="radio"/> December, 2009	04/28/2010	<b>Certified</b>
<input type="radio"/> January, 2010	06/02/2010	<b>Certified</b>
<input type="radio"/> February, 2010	06/30/2010	<b>Certified</b>

When you certify a record, you are not indicating that the record is valid – you are indicating that you have reviewed the record and taken appropriate action. This might mean the record has been cancelled, updated, or not changed at all. Each could be an appropriate action, depending on the record. All records must contain a check mark in the 'Certify' box for your validation to be considered complete. If all records are not checked, validation is not complete and you will continue to receive messages from CIB. When all records have been certified, the Certification Status column on the validation home page will indicate 'Certified'. If it still shows a status of 'In-Process' at least 1 record has not been checked. Please double check the records and remember what certification means.



## Juvenile Probation/Parole Information

On Monday May 3, 2010 the Wisconsin Department of Corrections (DOC) made a change to the Probation/Parole File. DOC has expanded the file to include information on juveniles who are under Department of Corrections Supervision. Previously the file only contained adult records.

Juvenile responses from the Probation/Parole File will have the following caveat:

\*\*\*\*\* STATE JUVENILE SUPERVISION \*\*\*\*\*

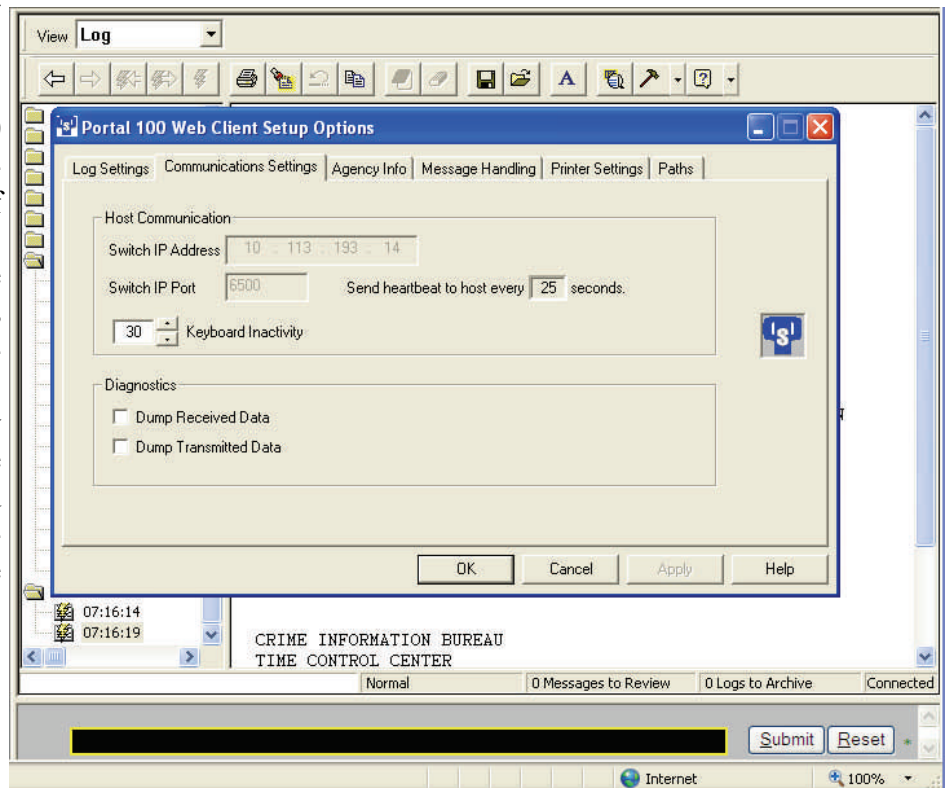
\*\*\* ALL JUVENILE INFORMATION IN DEPARTMENT OF CORRECTIONS/DIVISION OF JUVENILE CORRECTIONS IS TO BE CONSIDERED CONFIDENTIAL DO NOT RELEASE ANY INFORMATION WITHOUT PROPER AUTHORIZATION. \*\*\*

### Portal 100 - Is your time up?

As reported in an earlier security article in this newsletter, CJIS Security Policy now requires implementation of session locks after a maximum of 30 minutes of inactivity (with the exception of police vehicles and workstations that conduct dispatch functions within a physically secure location).

Agencies using Portal 100 software should review the location of their workstations and reset the default inactivity timer in Portal 100 for workstations that are not in a police vehicle or dispatch area, such as terminals located in a jail, detective bureau, etc.

When installed, the Portal 100 software defaults the inactivity setting to 480 minutes of inactivity (8 hours). Users with Portal 100 administrative authority must change this setting to 30 minutes, depending on workstation location, by clicking on the down arrow next to the Administrative Functions icon (hammer) and resetting the Keyboard Inactivity to 30 minutes on the Communications Settings tab.





## WI DL Photos

When CIB announced the availability of driver's license photos from other states via the eTIME browser, one of the comments that we heard was: "That's great, but what about photos of people with Wisconsin driver's licenses?" At the time, the Wisconsin statute governing the use of Wisconsin driver's license photos (§. 342.237(3)) prevented CIB from providing the photos via the TIME System, as it required that the request for the photo be in writing on law enforcement letterhead.



TIME System users will be happy to know that on March 15, 2010, Governor Doyle signed into law Wisconsin Act 167, requiring DOT to make Wisconsin driver's license photos available to DOJ, and DOJ to provide them to law enforcement via the TIME System. CIB has already begun meeting with DOT and computer programming staff to make this a reality.

## Another Variation of \$ H

As you may know, a \$H message is sent to the ORI of an NCIC record when an inquiry results in a hit response and the Notify Originating Agency flag is set to Y (Yes). The inquiry could be made by any agency in Wisconsin or other states with NCIC access, including authorized federal agencies such as the US Customs Service. For security reasons, the US Customs Service routinely queries the names on airline flight manifests and as such, may cause the generation of a \$H message. Beginning August 1, 2010, if the \$H message is generated by one of 2 US Customs Service ORIs, the \$H message will specifically indicate that it is based on a passenger manifest inquiry. An example of such a message is below.

\$.H.

MD0012600

ORIGINATING AGENCY NOTIFICATION AT 1600 EST 20001215

VAUSC6050 US CUST SERV ENFORCEMENT SYSTEMS NEWINGTON

7681 BOSTON BLVD

SPRINGFIELD VA

703 921-6000

QW.VAUSC6050.NAM/SMITH, JOHN J.SEX/M.RAC/W.DOB/19511012

\*\*\*\*\*THIS NOTIFICATION IS BASED ON A PASSENGER MANIFEST INQUIRY\*\*\*\*\*

MKE/WANTED PERSON

2 - LIMITED EXTRADITION SEE MIS FIELD

ORI/MD0012600 NAM/SMITH, JOHN J SEX/M RAC/W POB/TX DOB/19521012

HGT/510 WGT/175 EYE/BRO HAI/BRO CTZ/US SKN/DRK

OFF/RAPE - GUN

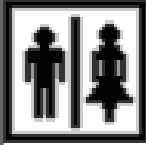
DOW/19981218 OCA/465978124

MIS/EXTR EAST OF MISSISSIPPI ONLY

ORI IS ANY CITY PD MD 301 555-1212

NIC/W146203714 DTE/20000114 1400 EST DLU/20080517 1600 EST

IMMED CONFIRM WARRANT AND EXTRADITION WITH ORI



## NCIC Sex Offender Registry File

TIME System users may notice some changes in the layout and format of responses from the NCIC Sex Offender Registry File beginning August 1, 2010. A host of new fields will be available, allowing for entry of additional information to further identify the offender, such as email address, internet identifier, etc., show what the offender's relationship, if any, was to the victim, and more. A list of these new fields can be found at the end of this newsletter in the NCIC & CIB Code Updates section.

One field in particular, Tier Level (TIR) required further explanation. The TIR Field represents the federal tier level as defined in Public Law 109-248, Section 111. There are 3 possible tier levels:

**Tier 3:** a sex offender whose offense is punishable by imprisonment for more than 1 year and:

- is comparable to or more severe than the following offenses, or an attempt or conspiracy to commit such an offense: 1) aggravated sexual abuse or sexual abuse or 2) abusive sexual contact against a minor who has not attained the age of 13 years;
- involves kidnapping of a minor (unless committed by a parent or guardian);
- occurs after the offender becomes a tier 2 sex offender.

**Tier 2:** a sex offender other than a Tier 3 sex offender whose offense is punishable by imprisonment for more than 1 year and:

- is comparable to or more severe than the following offenses, when committed against a minor, or an attempt or conspiracy to commit such an offense against a minor: 1) sex trafficking; 2) coercion and enticement; 3) transportation with intent to engage in criminal sexual activity; 4) abusive sexual contact
- involves: 1) use of a minor in a sexual performance; 2) solicitation of a minor to practice prostitution; 3) production or distribution of child pornography; or
- occurs after the offender becomes a Tier I sex offender.

**Tier 1:** a sex offender other than a Tier 2 or Tier 3 sex offender.

### eTIME Web Address



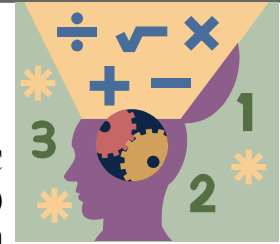
Reminder: eTIME browser users can log in to the eTIME browser without logging in to WILENET first by going directly to <http://wi-time.gov>.



### \$B Additional Hits

Agencies that receive a \$B Batch File Notice message from NCIC pertaining to an inquiry with over 50 near hits and that do not have a Portal 100 terminal to query the batch file number may still retrieve the additional results by contacting NCIC directly at 304-625-2941, ORI DCFBIWA08 or DCFBIWA09, email [acjis@leo.gov](mailto:acjis@leo.gov).

## Share the NCIC Math: DOE-DOW=?



June first is coming, and with it CIB anticipates once again receiving the NCIC report comparing the Date of Warrant (DOW) and the Date of Entry (DOE) Fields for each wanted person record entered to NCIC. The Crime Information Bureau will forward this report to the individual agencies.

NCIC believes that making agencies aware of their own statistics in this area may assist in more timely entries of wanted person records in the future. To ensure maximum system effectiveness, NCIC policy states that records must be entered immediately when the conditions for entry are met, not to exceed three days upon receipt by the entering agency.

This report compares Date of Warrant to Date of Entry only, and your agency may very well be in compliance. But why stop there? Share the information.

Agencies have reported to CIB that they routinely meet the goal of entering all warrants they receive within 72 hours, and are disappointed in the fact that this report is not distributed to their local clerk or courts and/or district attorney's office, as some of the delay reflected in this report may be due to court or other delays in forwarding the warrant information to law enforcement for entry. Agencies are encouraged to share this report with the appropriate district attorney's office and/or clerk of court personnel to begin a dialogue about the timely entry of warrants.

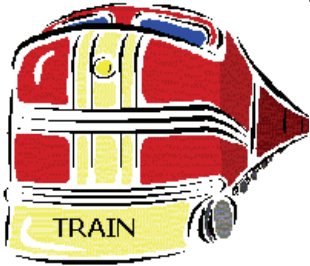
## Child Support & DOT



The Wisconsin Department of Children & Families Bureau of Child Support and the Wisconsin Department of Transportation have an agreement in place to provide child support agencies with direct online, internet-based access to driver's license and vehicle registration information. Before access is granted to this DOT System, a criminal background check must be conducted on the user as a requirement of the Federal Driver Privacy Protection Act.

Recently a law enforcement agency contacted CIB with a question: was it OK to request criminal history record information for this purpose via the TIME System?

As this criminal background check is required by law, TIME System policy does allow for the use of the system for this purpose. Users should be certain to use the proper purpose code, purpose code E, and be aware that each time an agency requests a criminal history using purpose code E the agency is charged a fee. If your law enforcement agency does not wish to conduct such background checks, child support agencies may conduct the background check using CIB's online access to Wisconsin adult criminal history record information at <http://wi-recordcheck.org/>.



## Don't Take the Wrong TRAIN

TIME System users who wish to use CIB's online training website, TRAIN, to obtain or recertify a TIME System certification should be careful to make sure they are logging on to the correct Wisconsin training website.

A user reported to CIB that he could not login to the TRAIN website and asked for assistance in resolving the problem. After some time and many questions, it was discovered that he was attempting to login to a completely different website, the TRAIN-Wisconsin site maintained by the Wisconsin Department of Health Services. This site offers training to emergency services and other public health personnel on topics such as communicable diseases, the incident command system, disaster management, etc.

CIB's training website, TRAIN, can most easily be accessed by following the 'TIME System' link on the front page of Wilenet.org. And remember: If you don't see the TRAIN engine and the Wisconsin Department of Justice logo, you're probably in the wrong spot!



## NCIC & CIB Code Updates

### New Field Name Abbreviations, Person of Interest

PAK Person of interest alias  
 PEY Person of interest eye color  
 PHA Person of interest hair color  
 PHG Person of interest height  
 PIB Person of interest date of birth  
 PIN Person of interest name  
 PIR Person of interest race  
 PIX Person of interest sex  
 PLN Professional license number  
 PLT Professional license type  
 PMI Person of interest misc. information  
 POI Person of interest  
 PSK Person of interest skin tone  
 PSS Person of interest social security number  
 PWG Person of interest weight

### New Field Name Abbreviations, Sex Offender Registry File

ADD Address type  
 BDA Beginning date at address  
 EDA Ending date at address  
 EMP Employer Name  
 IID Internet identifier  
 JUV Juvenile offender indicator  
 OCP Occupation  
 ROV Relationship of victim  
 SHN School name  
 TIR Tier level  
 TNT Telephone type  
 VOW Vehicle ownership